

LORCA PARADISE



GROUND FLOOR



SOLARIUM

MODEL SIERRA 11.8

USABLE SURF.: 101.65 m²
 BUILD SURF.: 116.18 m²
 PLOT SIZE: 534,68 m²

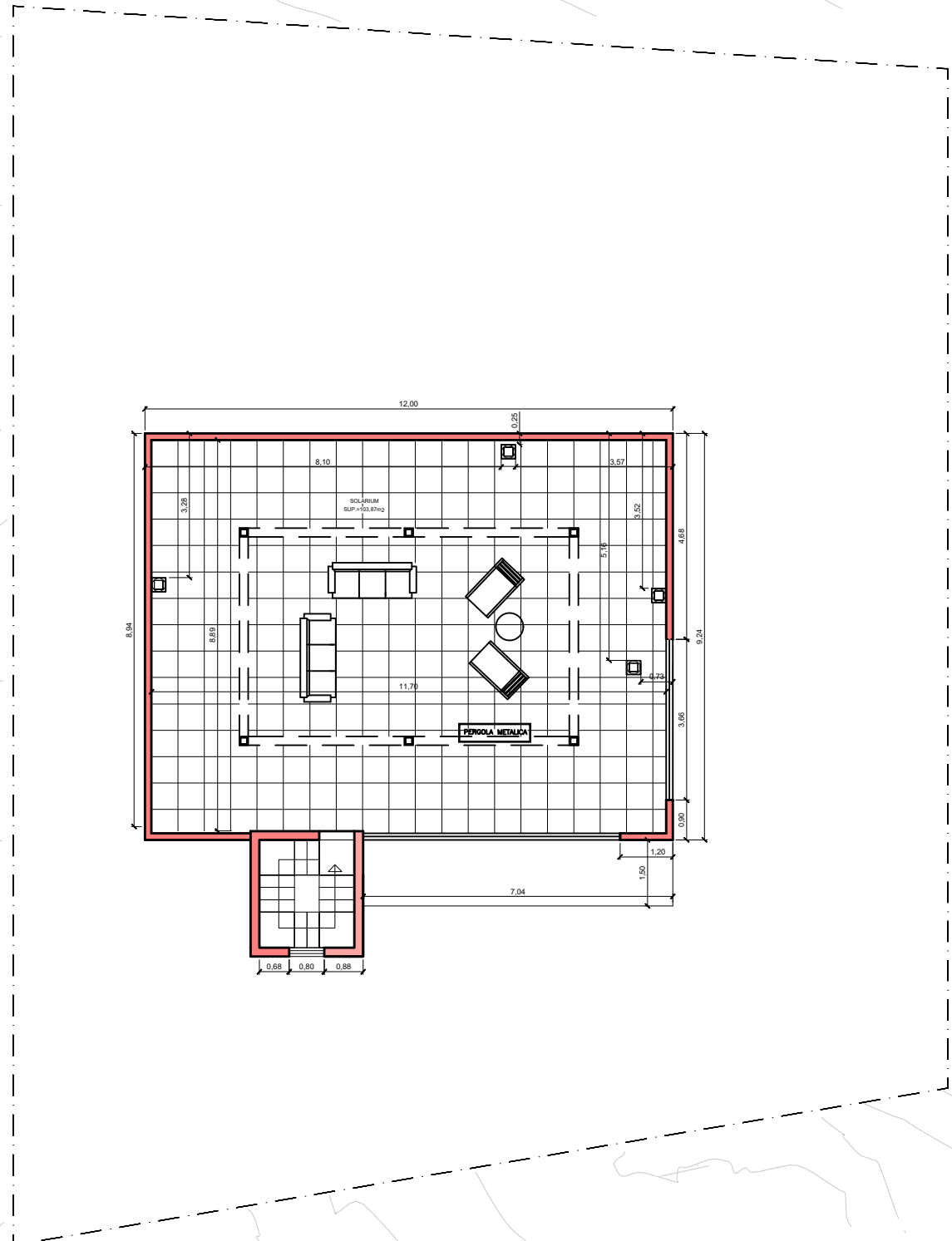
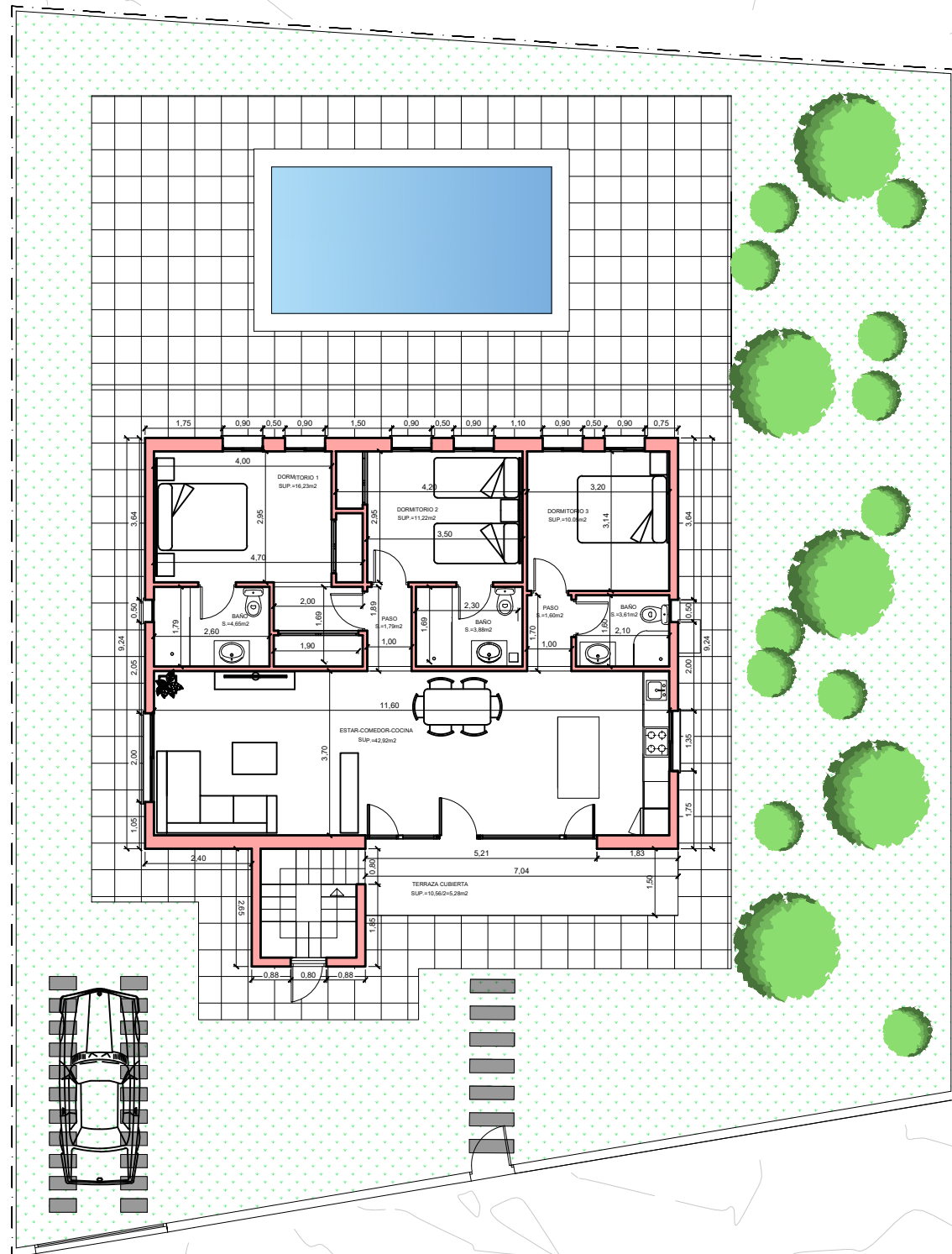
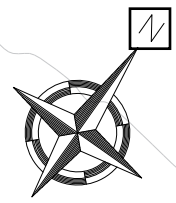
LIVING ROOM-KITCHEN	42.92 m ²
BEDROOM 1	16.23 m ²
BEDROOM 2	11.22 m ²
BEDROOM 3	10.05 m ²

BATHROOM 1	4.65 m ²
BATHROOM 2	3.88 m ²
BATHROOM 3	3.61 m ²

DRESSING ROOM	3.38 m ²
HALL 1	1.79 m ²
HALL 2	1.60 m ²

COVERED TERRACE	10.56 / 2= 5.28 m ²
POOL	20.79 m ²
SOLARIUM	103.87 m ²

This document is for illustrative purposes only and is not legally binding. Floorplans are subject to change based on technical considerations, construction updates, or planning regulations.



	SUP. UTIL	SUP. CONST.
VIVIENDA PLT. BAJA	S= 101.65 m ²	S= 116.18 m ²
PISCINA	6.30 x 3.30 m	